



K2 connect SLD registration

August 24

DOCUMENT VERSION | 1.0



CONTENTS

CONTENTS	2
INTRODUCTION	3
> What is SLD Registration?	3
> Perform the SLD Resistration.....	4

INTRODUCTION

The scope of this document is to discuss and demonstrate how K2 connect for SAP clients can perform an SLD Registration using the K2 connect Administration tools. The registration takes place using tooling provided by the K2 connect for SAP Administration tools. The registration is only done once and subsequent updates to the K2 connect for SAP installation will be updated by the installer.

WHAT IS SLD REGISTRATION?

Note: The information provided in this section applies to SAP, and the SAP instance to which the K2 connect for SAP installation connects to.

The System Landscape Directory (SLD) is the central information repository for the system landscape (Software Catalogue). It contains information about all installable and installed components in a system landscape. With the integration of many LOB (Line of Business) systems, system landscapes consist of multiple distributed software components with different platform dependencies, different interfaces and different requirements regarding installation and change management.

To create an overall concept that facilitates the implementation, upgrade and maintenance of even complex system landscapes, comprehensive information is required. This is where System Landscape Directory (SLD) comes into play. The SLD contains two kinds of information namely the Component Information and the Landscape Description.

- *Component Information:* This describes the building blocks of solutions and their possible combinations and dependencies. It describes the world of installable landscape elements and corresponds to the application model in CIM. The various types of dependencies between building blocks play an important role in landscape implementation, change management and solution validation. The content of the Component Information is delivered by SAP and can be updated
- *Landscape Description:* This provides an exact picture of installed landscape elements including the connections between the systems. It corresponds to the core and systems model in CIM. The content of the Landscape Description is created during the landscape implementation and automatically maintained through the whole software lifecycle

From the SLD's perspective, applications that do not run on the SAP Application Server ABAP or Java are considered to be third-party systems that require registration. Non ABAP and non-Java SAP systems with unspecific characteristics fall into the same category. There are several methods available to register a SSP component on the system landscape data in the SLD and the transport protocol in general is HTTP/HTTPS. The method employed by K2 connect is to send an XML-File with HTTP to the SLD for registration purposes.

PERFORM THE SLD RESISTRATION

Requirements

The following requirements must be met to perform the K2 connect for SAP SLD registration:

- K2 connect V1 for SAP, for K2 blackpearl 4.5 (4.10060.1.0) with Update KB000674
- The name of the SLD Server, Port, Username and Password

How to

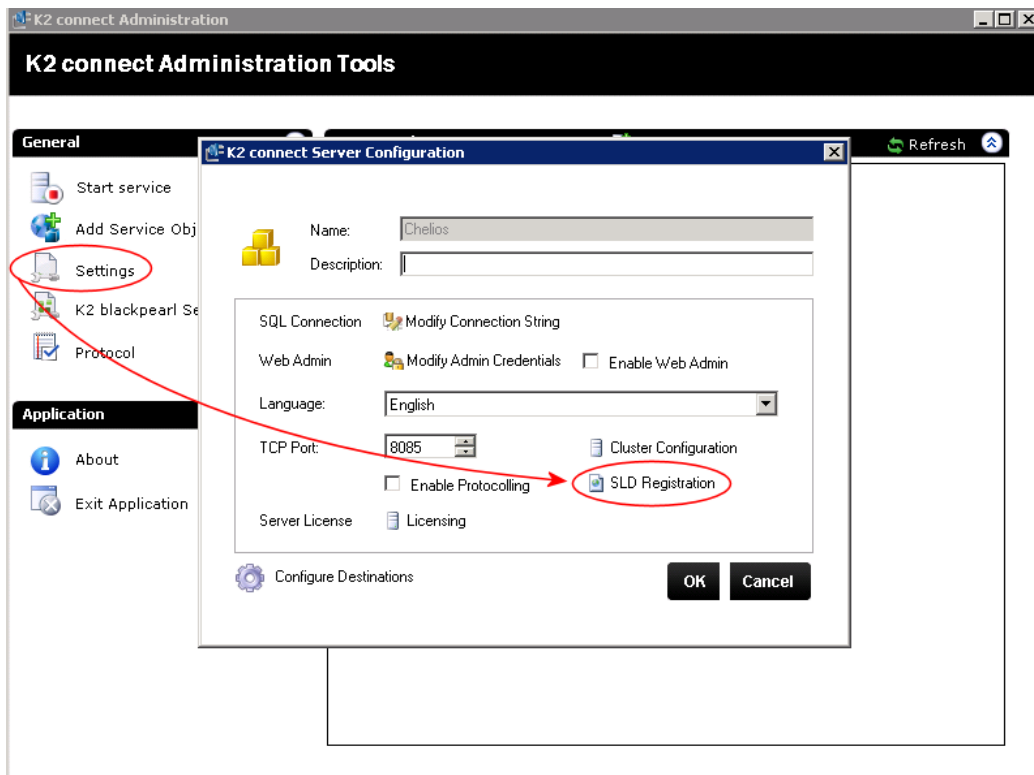
This section will describe how to step through the registration process. There is no need to access the SAP instance, and the entire registration process is completed using the K2 connect for SAP Administration Tools.

To start the registration process perform the following:

Step 1: Ensure that the Update KB000674 has been installed, and this has been done successfully

Step 2: From the Start menu, locate the K2 connect for SAP Menu option; K2 connect for SAP > K2 connect Administration Tools

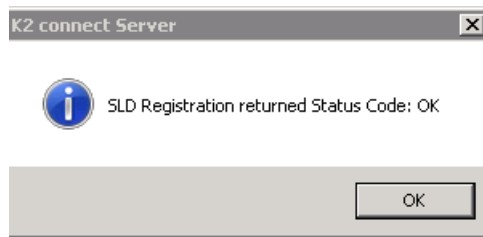
Step 3: When the K2 connect for Administration tools load, click **Settings > SLD Registration**



Step 4: When the SLD Registration form loads, enter the details as shown and then click **OK**.



Step 5: When done correctly, the following dialog will appear confirming that the SLD Registration process was successful.



Note: This procedure only needs to be completed once per installation. Any subsequent registrations will just overwrite previous entries in the SLD.